

AI and The SACE



YOU CAN USE AI FOR LEARNING

Generative AI tools, like ChatGPT, can be used like any other internet source but **you cannot submit AI-generated text as your own work (no copy/paste)**. Your submitted work must reflect the learning process undertaken in class.

1

2

ACCEPTABLE USES

AI acts as an idea generator. You select the best ideas.

AI acts as a Socratic opponent. You refine your arguments.

AI suggests areas for further research and directs you to reliable sources.

AI acts as a study buddy. You ask it for quizzes, exercises, and learning challenges.

AI acts as a proofreader and suggests areas for improvement (but not specific changes).



3

AI AS A SOURCE

AI is not a reliable source of specific information. They sometimes make stuff up. Any information from an AI must be confirmed by other sources.

All AI use must be cited appropriately and listed in your bibliography according to the appropriate referencing style (see overleaf).

A full transcript of any conversations with AI must be submitted as an appendix to your assignment.



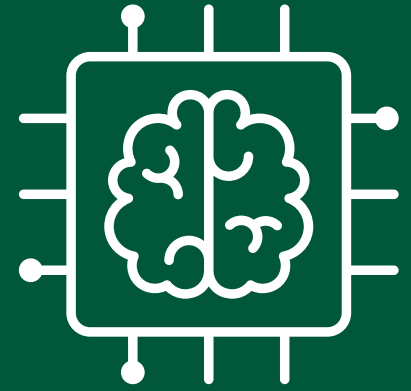
DIGITAL CITIZENSHIP AT MERCEDES COLLEGE

4

Digital citizenship is the effective, safe, responsible and ethical use of technology and the internet, including social media, email, and all forms of online communication in our personal, academic and professional lives.

AI should not be used by people under 18 years old without parental permission. AI use in schoolwork will never be an expectation .





Referencing AI



AS A SOURCE OF SPECIFIC INFORMATION

When using AI as a source of specific information, you must provide appropriate references. The exact format will depend on the referencing system used in the subject, but your references should include:

- the developer of the AI tool
- the name of the tool
- what prompt was entered for that information
- the date that the text was generated.

If you need to reference multiple prompts add a letter of the alphabet to the end of the year in your in-text reference and bibliography eg. (Open AI, 2023a). This is so your prompts can be connected clearly to the reference.

EXAMPLES

Type of Source	How to cite in text	How list in References or Bibliography
Text Generative AI (such as ChatGPT)	Include the reference in parentheses: ... (Open AI, 2023)... Or work it into the text: ChatGPT named four films that were influenced by Hamlet: <i>The Lion King</i> , <i>Rosencrantz & Guildenstern are Dead</i> , <i>The Bad Sleep Well</i> and <i>Strange Brew</i> (Open AI, 2023).	Open AI (2023) "Which films have been influenced by Shakespeare's Hamlet" <i>ChatGPT</i> (May 8, 2023) < http://chat.openai.com >
Image Generative AI (such as Dall-E)	Include the reference and prompt in parentheses in the text or as a caption for the image: ...(Open AI, "Dog riding a skateboard", 2023)... Or work it into the text: I started with a reference image using Dall-E with the prompt "dog riding a skateboard" (Open AI, 2023).	Open AI (2023) "Dog riding a skateboard" <i>Dall-E</i> (May 8, 2023) < http://labs.openai.com >

WHEN USED AS A LEARNING TOOL

When using generative AI in your work, you should include an appendix that lets the reader know which tools you used and which prompts you entered. This is particularly important if you have used AI tools in your work but not directly in a way that would require referencing.

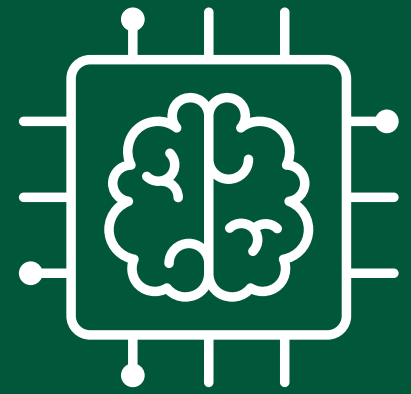
In your appendix, you should:

- Provide the detail of which technology was used
- List the prompts that you have used and the date
- Outline what you did with the output of the prompts.

EXAMPLE
In my essay, I used Open AI's ChatGPT (<http://chat.openai.com/>) to begin my search. The prompts I used were:

- *What are the main themes of Hamlet (May 3, 2023)*
- *Who are the main characters in Hamlet (May 3, 2023)*
- *Which films have been influenced by Shakespeare's Hamlet (May 8, 2023)*
- *What connections are there between The Lion King and Hamlet (May 8, 2023)*

These prompts were used to make a list of ideas that I then refined to use for my essay.



AI and The IBDP



YOU CAN USE AI FOR LEARNING

Generative AI tools, like ChatGPT, can be used like any other internet source but **you cannot submit AI-generated text as your own work (no copy/paste)**. Your submitted work must reflect the learning process undertaken in class.

1

2

ACCEPTABLE USES

AI acts as an idea generator. You select the best ideas.

AI acts as a Socratic opponent. You refine your arguments.

AI suggests areas for further research and directs you to reliable sources.

AI acts as a study buddy. You ask it for quizzes, exercises, and learning challenges.

AI acts as a proofreader and suggests areas for improvement (but not specific changes).



3

AI AS A SOURCE

AI is not a reliable source of specific information. They sometimes make stuff up. Any information from an AI must be confirmed by other sources.

All AI use must be cited appropriately and listed in your bibliography according to the appropriate referencing style (see overleaf).

A full transcript of any conversations with AI must be submitted as an appendix to your assignment.



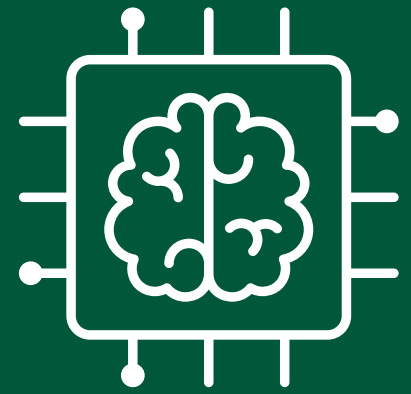
DIGITAL CITIZENSHIP AT MERCEDES COLLEGE

4

Digital citizenship is the effective, safe, responsible and ethical use of technology and the internet, including social media, email, and all forms of online communication in our personal, academic and professional lives.

AI should not be used by people under 18 years old without parental permission. AI use in schoolwork will never be an expectation .





Referencing AI



AS A SOURCE OF SPECIFIC INFORMATION

When using AI as a source of specific information, you must provide appropriate references. The exact format will depend on the referencing system used in the subject, but your references should include:

- the developer of the AI tool
- the name of the tool
- what prompt was entered for that information
- the date that the text was generated.

If you need to reference multiple prompts add a letter of the alphabet to the end of the year in your in-text reference and bibliography eg. (Open AI, 2023a). This is so your prompts can be connected clearly to the reference.

EXAMPLES

Type of Source	How to cite in text	How list in References or Bibliography
Text Generative AI (such as ChatGPT)	Include the reference in parentheses: ... (Open AI, 2023)... Or work it into the text: ChatGPT named four films that were influenced by Hamlet: <i>The Lion King</i> , <i>Rosencrantz & Guildenstern are Dead</i> , <i>The Bad Sleep Well</i> and <i>Strange Brew</i> (Open AI, 2023).	Open AI (2023) "Which films have been influenced by Shakespeare's Hamlet" <i>ChatGPT</i> (May 8, 2023) < http://chat.openai.com >
Image Generative AI (such as Dall-E)	Include the reference and prompt in parentheses in the text or as a caption for the image: ...(Open AI, "Dog riding a skateboard", 2023)... Or work it into the text: I started with a reference image using Dall-E with the prompt "dog riding a skateboard" (Open AI, 2023).	Open AI (2023) "Dog riding a skateboard" <i>Dall-E</i> (May 8, 2023) < http://labs.openai.com >

WHEN USED AS A LEARNING TOOL

When using generative AI in your work, you should include an appendix that lets the reader know which tools you used and which prompts you entered. This is particularly important if you have used AI tools in your work but not directly in a way that would require referencing.

In your appendix, you should:

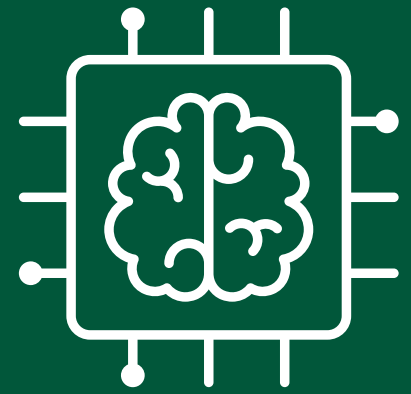
- Provide the detail of which technology was used
- List the prompts that you have used and the date
- Outline what you did with the output of the prompts.

For example:

In my essay, I used Open AI's ChatGPT (<http://chat.openai.com/>) to begin my search. The prompts I used were:

- *What are the main themes of Hamlet (May 3, 2023)*
- *Who are the main characters in Hamlet (May 3, 2023)*
- *Which films have been influenced by Shakespeare's Hamlet (May 8, 2023)*
- *What connections are there between The Lion King and Hamlet (May 8, 2023)*

These prompts were used to make a list of ideas that I then refined to use for my essay.



AI and The MYP



YOU CAN USE AI FOR LEARNING

Generative AI tools, like ChatGPT, can be used like any other internet source but **you cannot submit AI-generated text as your own work (no copy/paste)**. Your submitted work must reflect the learning process undertaken in class.

1

2

ACCEPTABLE USES

AI acts as an idea generator. You select the best ideas.

AI acts as a Socratic opponent. You refine your arguments.

AI suggests areas for further research and directs you to reliable sources.

AI acts as a study buddy. You ask it for quizzes, exercises, and learning challenges.

AI acts as a proofreader and suggests areas for improvement (but not specific changes).



3

AI AS A SOURCE

AI's are not reliable sources of specific information. They sometimes make stuff up. Any information from an AI must be confirmed by other sources.

All AI use must be cited appropriately and listed in your bibliography according to the appropriate referencing style (see overleaf).

A full transcript of any conversations with AI must be submitted as an appendix to your assignment.



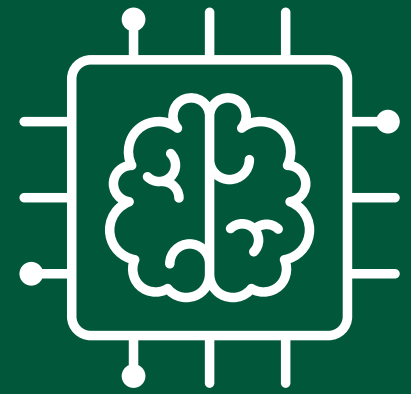
DIGITAL CITIZENSHIP AT MERCEDES COLLEGE

4

Digital citizenship is the effective, safe, responsible and ethical use of technology and the internet, including social media, email, and all forms of online communication in our personal, academic and professional lives.

AI should not be used by people under 18 years old without parental permission. AI use in schoolwork will never be an expectation .





Referencing AI



AS A SOURCE OF SPECIFIC INFORMATION

When using AI as a source of specific information, you must provide appropriate references. The exact format will depend on your year level and the expectations of your subject teacher, but your references should include:

- the developer of the AI tool
- the name of the tool
- what prompt was entered for that information
- the date that the text was generated.

If you need to reference multiple prompts add a letter of the alphabet to the end of the year in your in-text reference and bibliography eg. (Open AI, 2023a). This is so your prompts can be connected clearly to the reference.

EXAMPLES

Type of Source	How to cite in text	How list in References or Bibliography
Text Generative AI (such as ChatGPT)	Include the reference in parentheses: ... (Open AI, 2023)... Or work it into the text: ChatGPT named four films that were influenced by Hamlet: <i>The Lion King</i> , <i>Rosencrantz & Guildenstern are Dead</i> , <i>The Bad Sleep Well</i> and <i>Strange Brew</i> (Open AI, 2023).	Open AI (2023) "Which films have been influenced by Shakespeare's Hamlet" <i>ChatGPT</i> (May 8, 2023) < http://chat.openai.com >
Image Generative AI (such as Dall-E)	Include the reference and prompt in parentheses in the text or as a caption for the image: ...(Open AI, "Dog riding a skateboard", 2023)... Or work it into the text: I started with a reference image using Dall-E with the prompt "dog riding a skateboard" (Open AI, 2023).	Open AI (2023) "Dog riding a skateboard" <i>Dall-E</i> (May 8, 2023) < http://labs.openai.com >

WHEN USED AS A LEARNING TOOL

When using generative AI in your work, you should include an appendix that lets the reader know which tools you used and which prompts you entered. This is particularly important if you have used AI tools in your work but not directly in a way that would require referencing such the Year 6-7 requirements.

In your appendix, you should:

- Provide the detail of which technology was used
- List the prompts that you have used and the date
- Outline what you did with the output of the prompts.

For example:

In my essay, I used Open AI's ChatGPT (<http://chat.openai.com/>) to begin my search. The prompts I used were:

- *What are the main themes of Hamlet (May 3, 2023)*
- *Who are the main characters in Hamlet (May 3, 2023)*
- *Which films have been influenced by Shakespeare's Hamlet (May 8, 2023)*
- *What connections are there between The Lion King and Hamlet (May 8, 2023)*

These prompts were used to make a list of ideas that I then refined to use for my essay.